

COMMUNITY SOLAR

Alli Conine

Director of Member Services and
Corporate Communications
Wheatland Electric Cooperative, Inc.

Erica Schmidt

Manager, Power Contracts
Sunflower Electric Power Corporation



ABOUT US

PROGRAM DETAILS

SOLAR PROJECTS

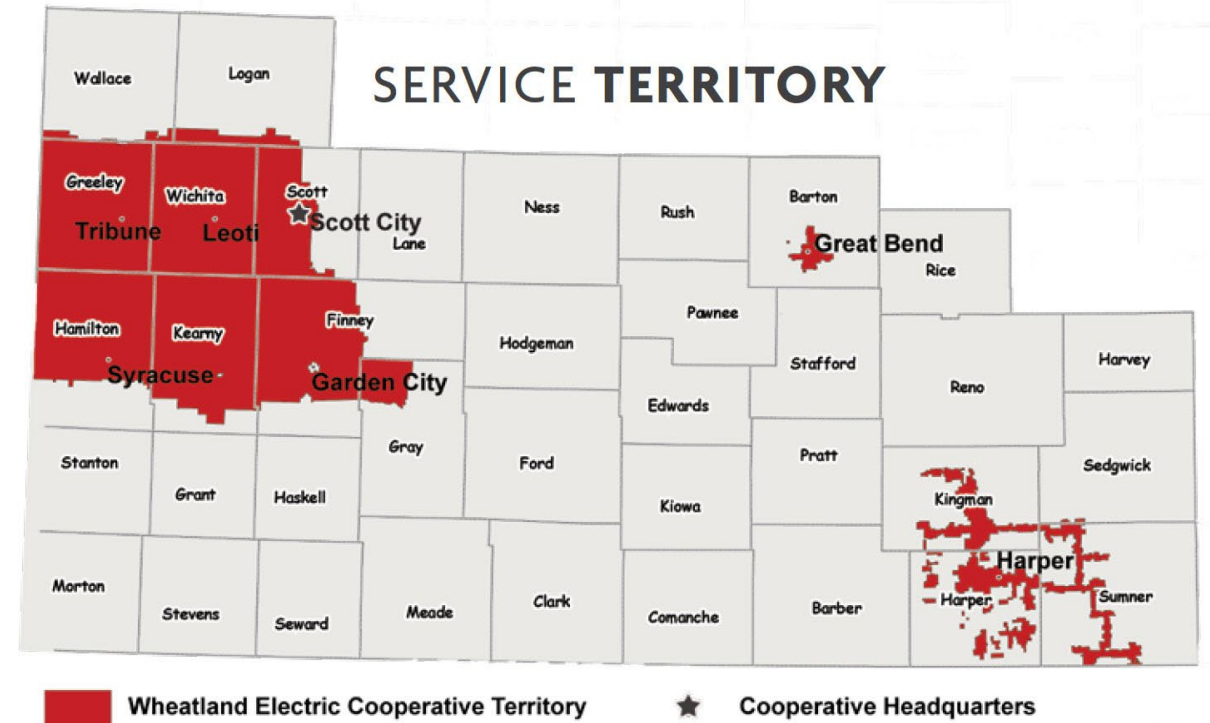
VALUE PROPOSITION

PROJECT TIMELINE

SOLAR RESOURCES

ABOUT WHEATLAND:

- *In 1948, nine visionary Western Kansas residents decided to take matters into their own hands and form an electric cooperative. They were tired of being left behind by the big for-profit power companies that didn't want to spend the money to connect rural America to the grid. And so, Wheatland Electric Cooperative was born.*
- *20,000+ members*
- *32,000 meters*
- *14 Kansas counties and parts of 3 counties in Colorado.*

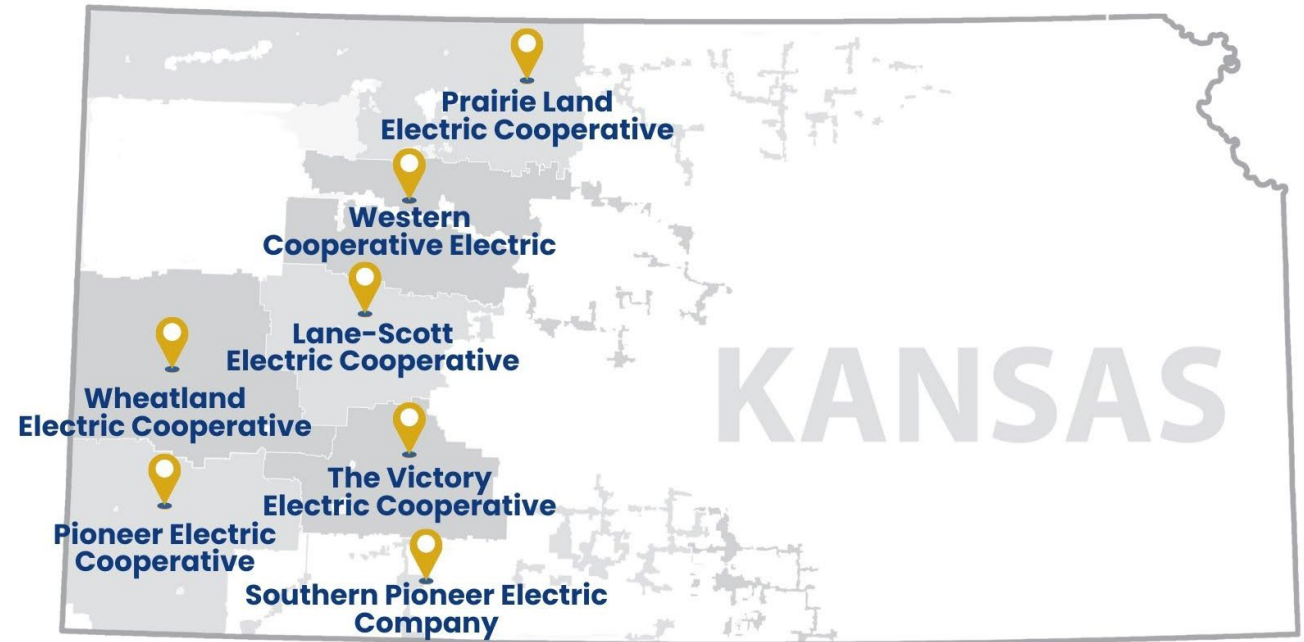




ABOUT SUNFLOWER

Sunflower was formed in 1957 by six electric distribution cooperatives serving in western Kansas

Sunflower's primary mission is to provide an adequate, reliable, long-term, wholesale power supply and transmission services to our seven members at the lowest possible cost consistent with sound business and cooperative principles. Our members' territories now extend to more than 50 counties in central and western Kansas.



Sunflower is owned and governed by six member distribution cooperatives and one wholly owned subsidiary

RESOURCE PORTFOLIO

Sunflower takes a cost-biased approach in its utilization of electric generation resources to ensure energy is more affordable for our member cooperatives.



COAL

Holcomb 1
(349 MW)



SOLAR

Johnson Corner Solar
(20 MW)

COMING SOON:

Russel Solar
(20MW)

Fort Dodge Solar
(150 MW)



WIND

Smoky Hills
(74 MW PPA)
Shooting Star
(104 MW PPA)



NATURAL GAS

Rubart Station
(120 MW)
Fort Dodge
(149 MW)
Great Bend
(82 MW)
Cimarron River
(50 MW)
Clifton (85 MW)
S2 (98 MW)
S4 (71 MW)
S5 (71 MW)



SUNFLOWER SOLAR

Johnson Corner Solar

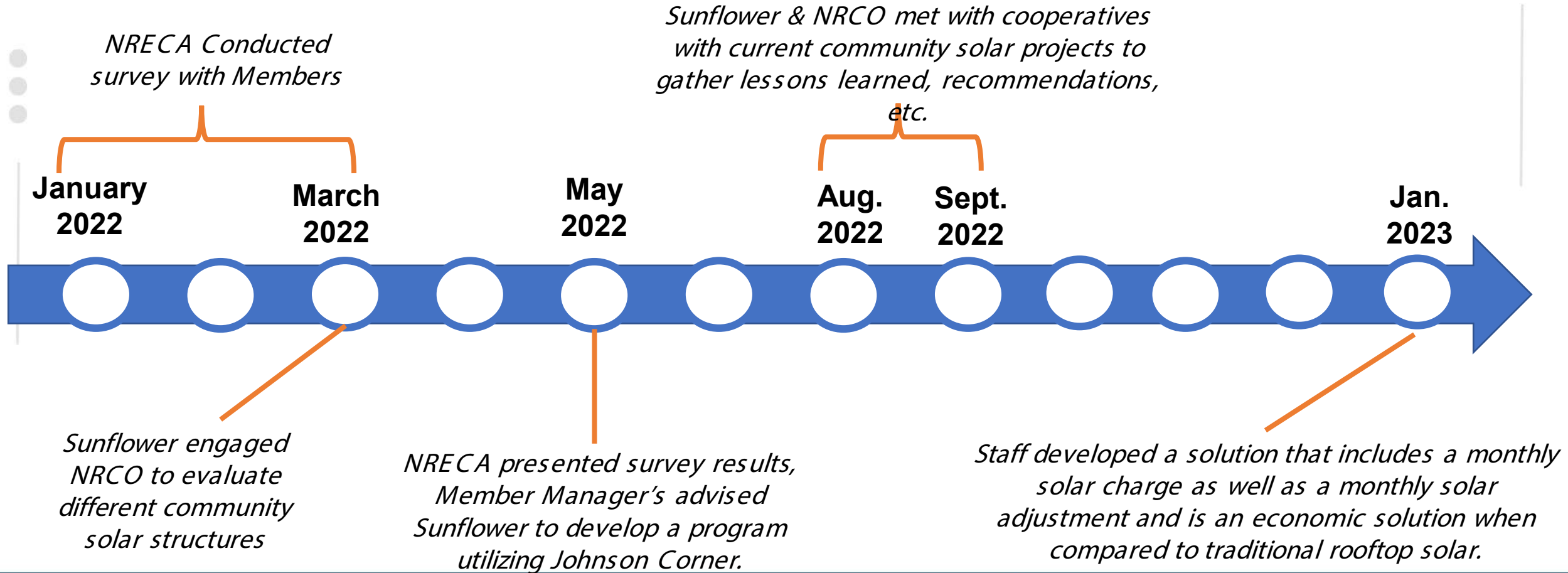
- 20 MW AC
- COD April 2020
- Located near Johnson City, KS
- PPA
- Largest solar facility in the state of Kansas.

Sunflower Solar at Russell

- 20 MW AC
- COD planned for January 2025
- Located near Russell, KS
- Sunflower owned and operated

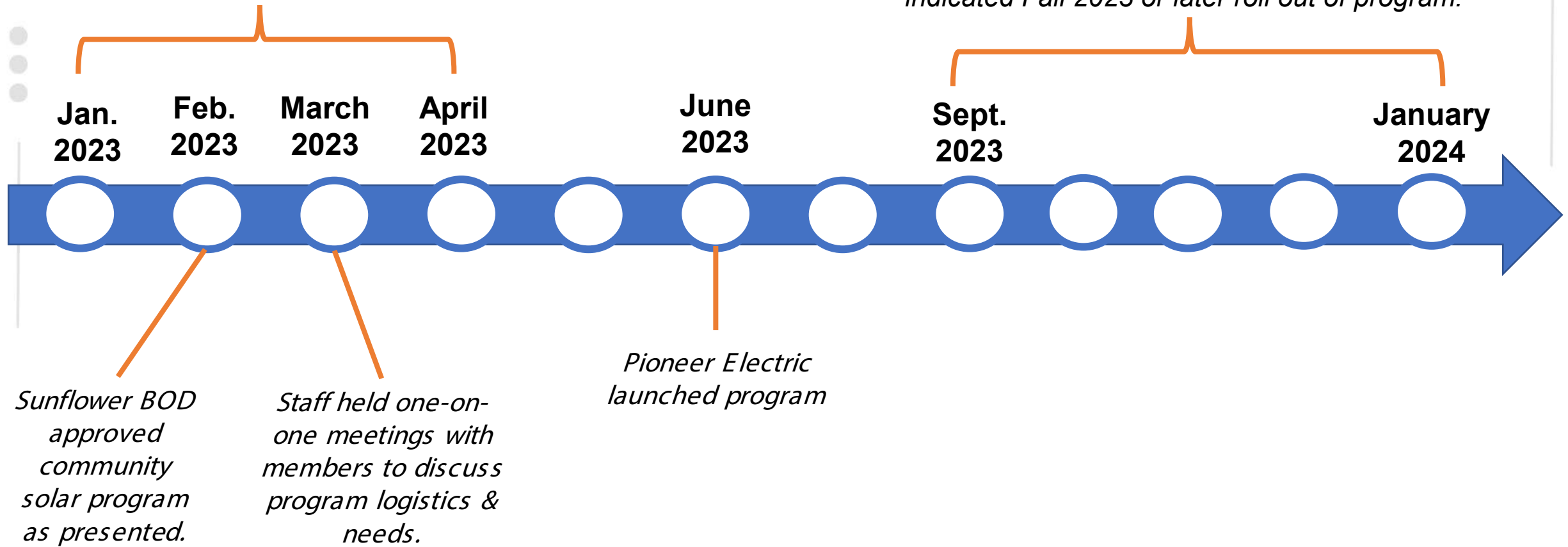


PROJECT TIMELINE



Staff developing marketing materials for members.

Wheatland, Prairie Land, Victory, and Western have indicated Fall 2023 or later roll out of program.



COMMUNITY SOLAR STUDY

- Data was collected through telephone and online surveying.
- *175 phone surveys*
- *180 email surveys*
- *More than two-thirds of our membership said they would participate in a community solar project.*
- *Six in ten said that the financial rewards would be the most important factor in their decision to install solar panels on their property or participate in a community solar project.*
- *One-fifth said that helping the environment would be the most important factor.*



COMMUNITY

 **SOLAR**

SHARE IN THE ECONOMIC BENEFITS OF SOLAR POWER WITHOUT THE COST OF INSTALLING ROOFTOP PANELS

- ☀️ AN AFFORDABLE ALTERNATIVE TO OWNING AND MAINTAINING A SOLAR ENERGY SYSTEM
- ☀️ NO ROOF DAMAGE
- ☀️ NO LARGE, UPFRONT INVESTMENT
- ☀️ SIMPLE SIGN-UP AND BILLING
- ☀️ AVAILABLE TO OWNERS AND RENTERS
- ☀️ EASY WAY TO SUPPORT RENEWABLE ENERGY

We're removing barriers to solar energy

COMING SOON!

JANUARY 2024

Solar Made Easy!

Wheatland Electric Cooperative
COMMUNITY  SOLAR



1. Wheatland's power supplier, Sunflower Electric Power Corporation, generates solar energy at its Johnson Corner Solar facility in Stanton County, Kansas.

2. Residential members can choose to subscribe to Wheatland's Community Solar program at a cost of \$5/share per month. 1 share = 125 kWh or 2 solar panels

3. On your electric bill, every month you will receive a solar adjustment for your solar shares, which is based on the revenues derived from the power sold into the energy market.

Shares are limited to no more than the average of your previous 12-month electric use. If your 12-month average = 1,000 kWh, then a max of 8 shares is allowed.

CONTACT US TO LEARN MORE:

 WECL.NET

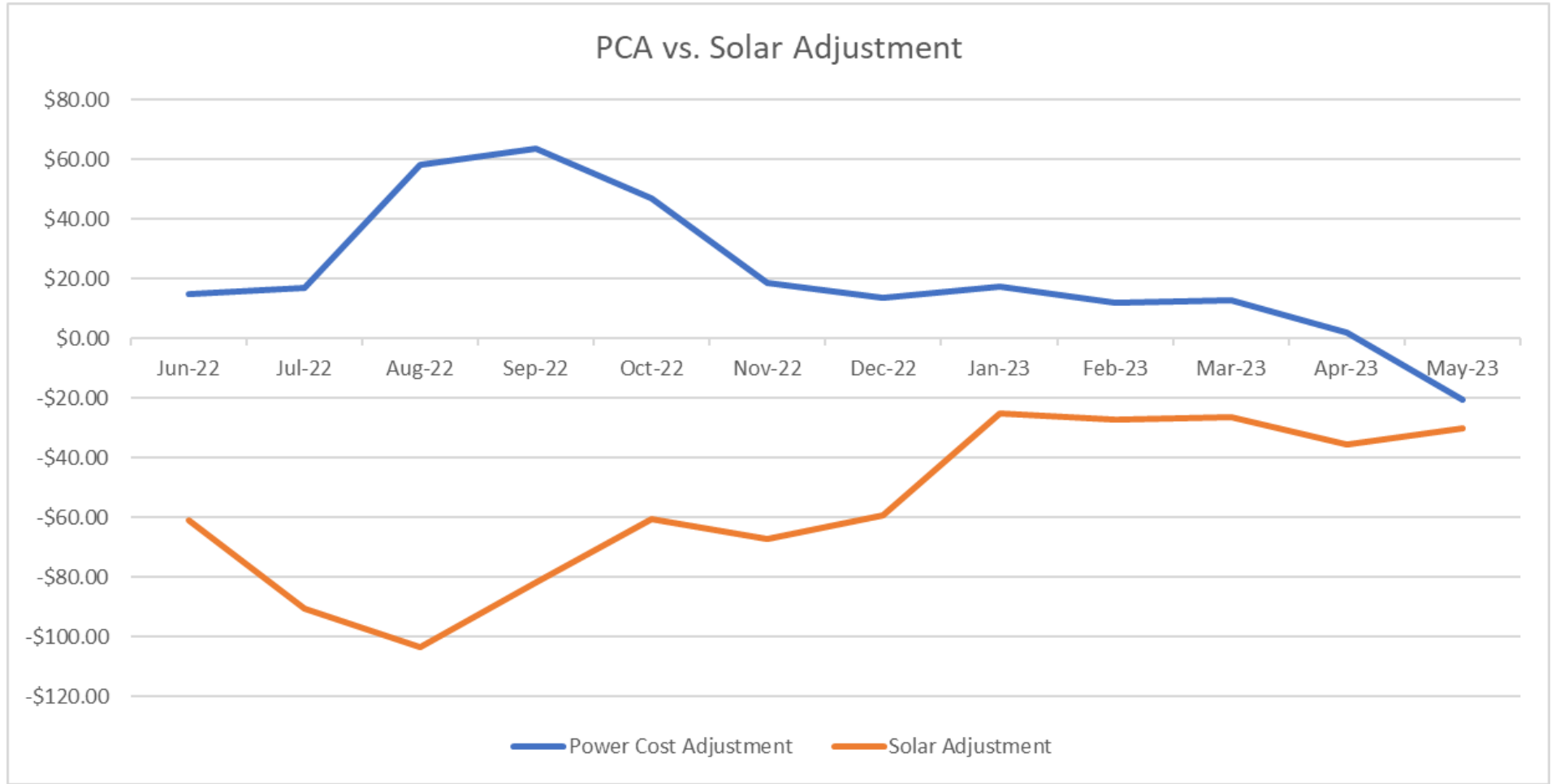
 CALL YOUR LOCAL OFFICE

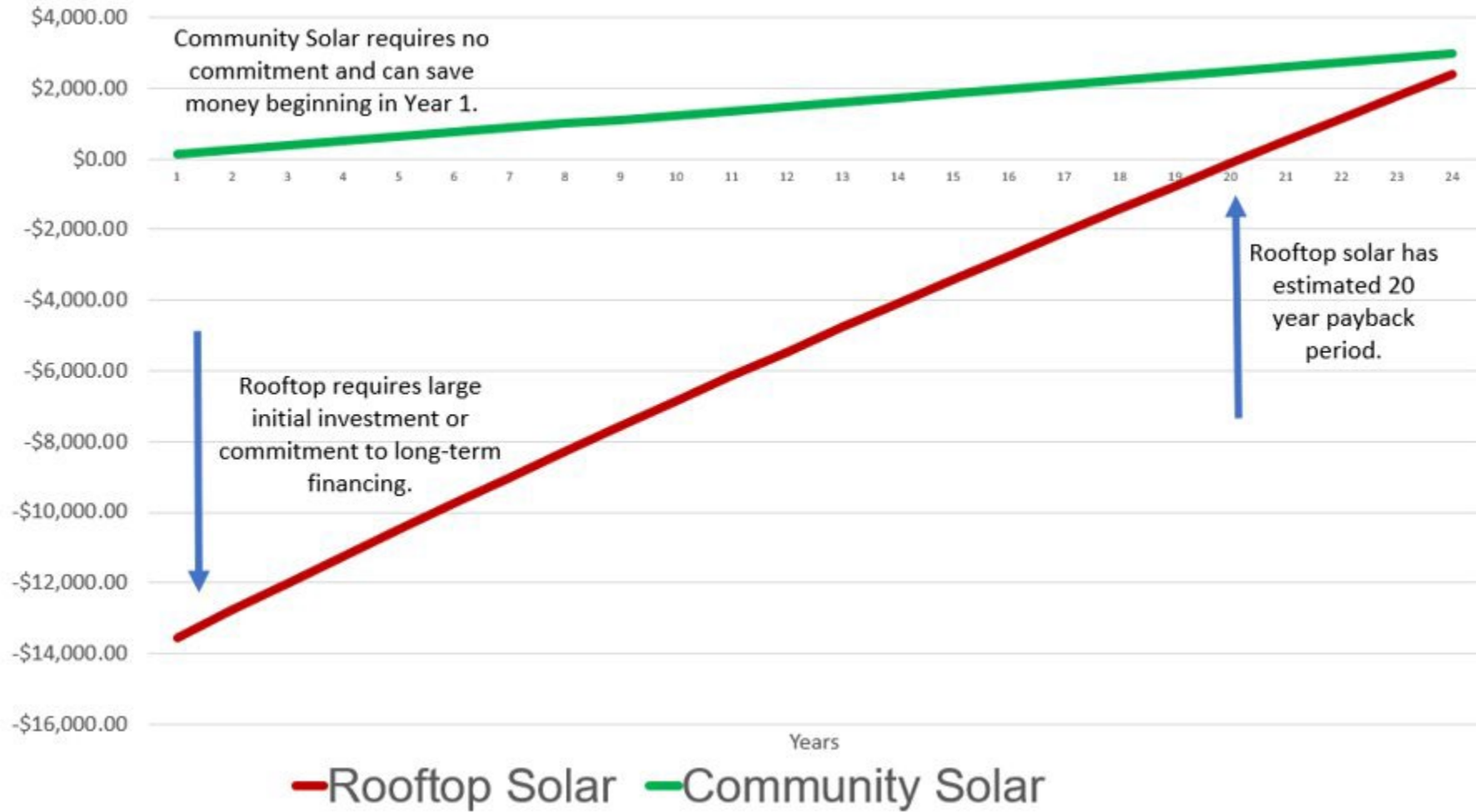


BILL BREAKDOWN

Month	Usage	Energy Cost	Service Charge	PCA	Tax	Bill w/o Solar	Solar Shares	Solar Energy	Solar Cost	Solar Adj.	Solar Adj.	Bill w/ Solar	Solar Participation (Savings) / Cost
	(kWh)	(\$/mo)	(\$/mo)	\$	\$	(\$/mo)		(kWh)	(\$/mo)	(\$/kWh)	(\$/mo)	(\$/mo)	
Jun-22	2296	\$221.53	\$28.50	\$15.09	\$3.48	\$268.60	8	1000	\$40.00	(\$0.06085)	(\$60.85)	\$247.74	(\$20.85)
Jul-22	2556	\$246.62	\$28.50	\$16.99	\$3.83	\$295.94	8	1000	\$40.00	(\$0.09046)	(\$90.46)	\$245.48	(\$50.46)
Aug-22	2939	\$283.57	\$28.50	\$58.23	\$4.84	\$375.14	8	1000	\$40.00	(\$0.10350)	(\$103.50)	\$311.64	(\$63.50)
Sep-22	2812	\$271.32	\$28.50	\$63.68	\$4.75	\$368.25	8	1000	\$40.00	(\$0.08155)	(\$81.55)	\$326.69	(\$41.55)
Oct-22	2075	\$200.21	\$28.50	\$46.99	\$3.62	\$279.32	8	1000	\$40.00	(\$0.06046)	(\$60.46)	\$258.85	(\$20.46)
Nov-22	1994	\$192.39	\$28.50	\$18.79	\$3.15	\$242.83	8	1000	\$40.00	(\$0.06712)	(\$67.12)	\$215.71	(\$27.12)
Dec-22	1606	\$154.95	\$28.50	\$13.63	\$2.58	\$199.66	8	1000	\$40.00	(\$0.05920)	(\$59.20)	\$180.46	(\$19.20)
Jan-23	2146	\$207.06	\$28.50	\$17.25	\$3.31	\$256.12	8	1000	\$40.00	(\$0.02526)	(\$25.26)	\$270.86	\$14.75
Feb-23	1918	\$185.06	\$28.50	\$11.82	\$2.96	\$228.34	8	1000	\$40.00	(\$0.02713)	(\$27.13)	\$241.21	\$12.87
Mar-23	1396	\$134.69	\$28.50	\$12.98	\$2.33	\$178.50	8	1000	\$40.00	(\$0.02611)	(\$26.11)	\$192.39	\$13.89
Apr-23	1854	\$178.88	\$28.50	\$1.85	\$2.74	\$211.97	8	1000	\$40.00	(\$0.03556)	(\$35.56)	\$216.41	\$4.44
May-23	1666	\$160.74	\$28.50	-\$20.50	\$2.22	\$170.96	8	1000	\$40.00	(\$0.03026)	(\$30.26)	\$180.70	\$9.74
Yearly Total	2104.8	\$2,437.02	\$342.00	\$256.80	\$39.81	\$3,075.63	8	1000	\$480.00		(\$667.48)	\$2,888.15	(\$187.48)



Rooftop vs. Community Solar

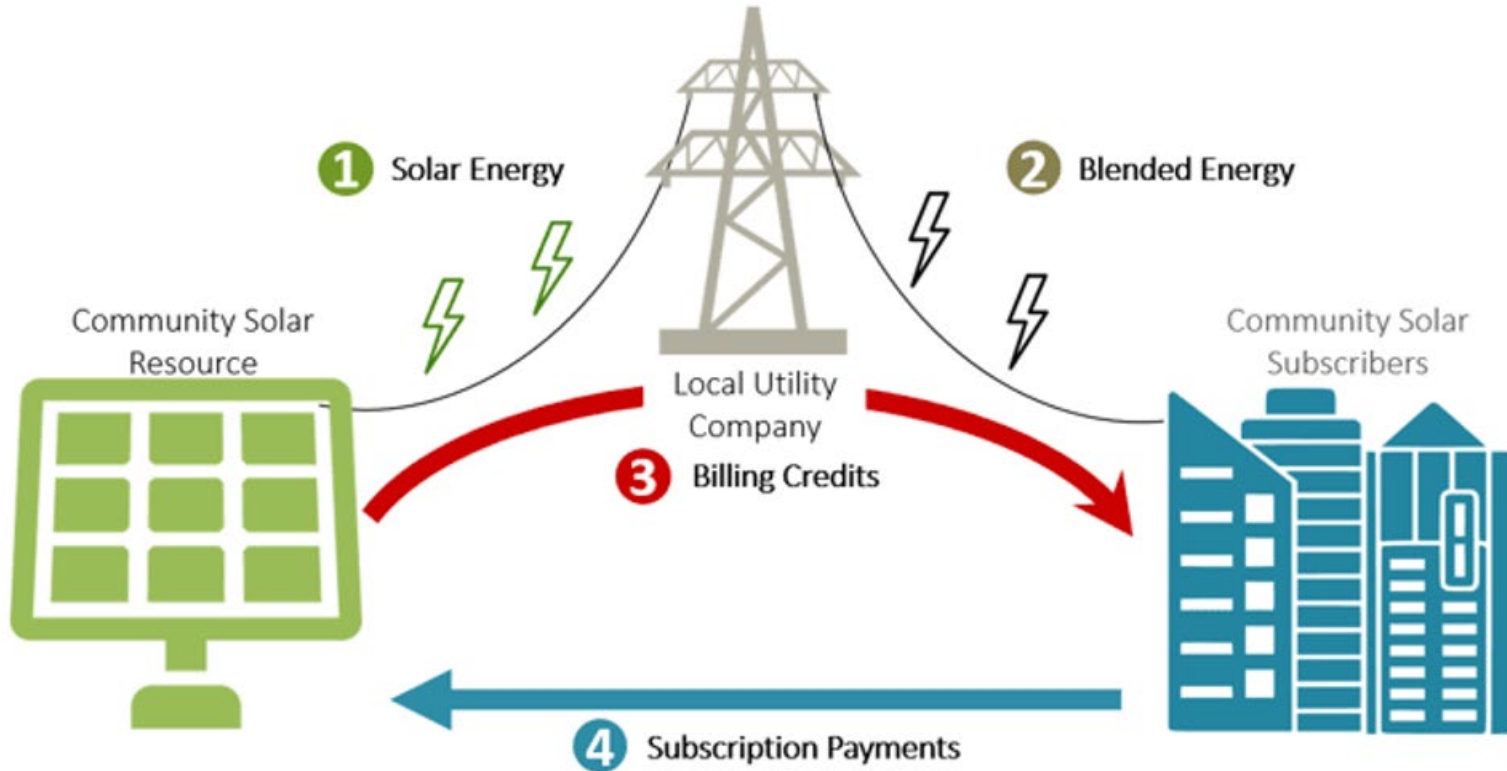


SOLAR SHARE ALLOCATIONS

	Residential Load Ratio Share	Shares Allotted	# of Customers Able to 100% Subscribe @ 1,000 kWh
Lane-Scott	0.03	597	75
Prairie Land	0.08	1,554	194
Pioneer	0.18	3,359	420
Southern Pioneer	0.16	2,907	363
Victory	0.19	3,548	443
Western	0.08	1,526	191
Wheatland	0.28	5,259	657
		18,750	2343.75

Based on 18,750 shares available for this program.

SUBSCRIPTION MODEL OVERVIEW

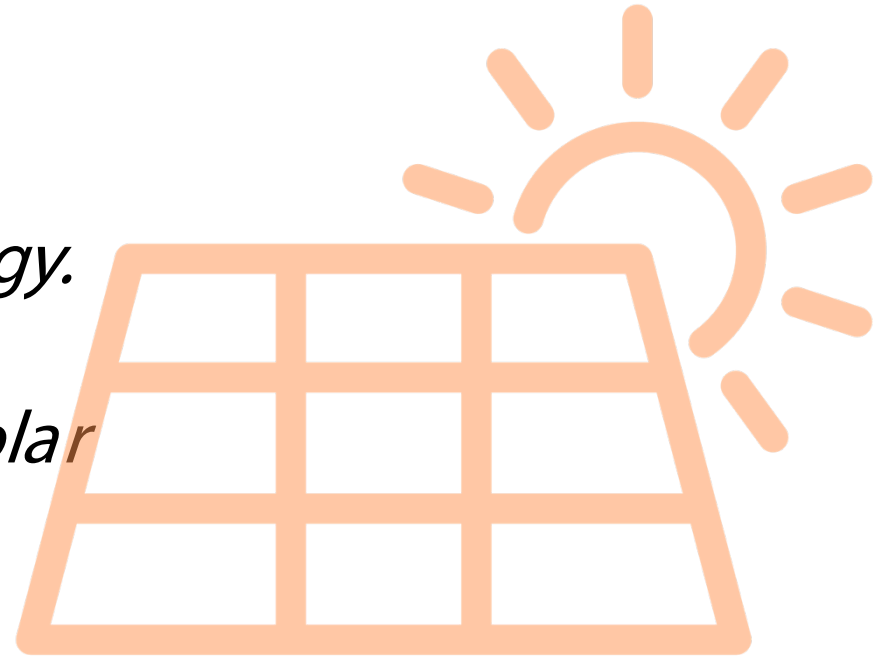


- 1** Community solar asset (Johnson Corner) delivers energy to the grid.
- 2** Wheatland Electric Cooperative delivers blended energy to all consumers
- 3** Wheatland Electric Cooperative applies on-bill adjustments to Community Solar subscribers.
- 4** Subscribers pay a fixed monthly subscription payment to Wheatland Electric Cooperative.

Graphic Source: <https://www.vniles.com/917/Community-Solar-Program>

VALUE PROPOSITION

- *No upfront investment.*
- *No damage to roof.*
- *Easy way to support renewable energy.*
- *Available to renters*
- *Monthly bill adjustments based on solar performance.*





ROOFTOP SOLAR 101

Before you sign ANYTHING:

- Always contact your local utility first!
- Make sure you understand the renewable contract.
- Check with your insurance company for special considerations.
- See our link for more!





DON'T GET BURNED BY SOLAR!

Before you sign ANYTHING:

- Contact your local utility first!
- Make sure you understand the renewable contract.
- Check with your insurance company for special considerations.
- See our link for more!



**Checklist for Interconnecting a Certified Inverter-Based Small Generating Facility
for Residential Service - No Larger Than 15kW
Residential Tariff Only**

Wheatland Electric must pre-approve ALL grid interconnections.

Availability: Net Metering service is available to member-generators on a first-come first-served basis until the total generating capability of all net metering interconnections during a calendar year equals or exceeds one percent of the Cooperative's peak load for the previous year.

- Member notifies Wheatland Electric Cooperative (WEC) and sets appointment to meet and review the application process for interconnection.
- Member meets with WEC to review terms and conditions, discuss possible service upgrades needed for interconnection and receives application and Member Service Rider. The interconnection agreement is between the member and WEC.
- Member sets appointment with WEC for application submission.
- Member returns completed application with a non-refundable application fee. The application must be signed and the application fee paid by the Member and not a third party.
- WEC reviews Application with Member, Member makes Member Service Rider election and signs Grid Access Charge Rider.*
- WEC issues a work order and begins internal review process.
- WEC approves or denies Member's application within 30 days.
(90 days for facility installations over 10kW)
- If approved, WEC returns a signed copy of application to Member and outlines any service upgrades required to accommodate new facility.
- WEC completes upgrade of service (if required) and invoices Member for upgrade cost.
- Member/electrician completes installation of small generating facility.
- Small generating facility is inspected by electrical inspector as required by local code. If no inspection is required by code, inspection will be completed by WEC.
- Member notifies WEC installation is complete and ready for interconnecting.
- WEC sets time for witness test, to be completed within 10 business days of notification.
- WEC representative inspects Small Generating Facility, performs witness test and completes Certificate of Completion, if appropriate. After successful witness test, Member-owned generating facility may be connected to grid.
- WEC approves interconnection of small generating facility and returns signed Small Generating Facility Certificate of Completion to Member.
- WEC installs detent meter and submits Net Metering tariff change for Member's account.
- Member can view net metered account on Smart Hub.

*Grid Access Charges are currently suspended.
For more information, call your local Wheatland Electric office or email memberservices@wec.net

QUESTIONS?

Alli Conine

Director of Member Services and
Corporate Communications

Wheatland Electric Cooperative, Inc.

aconine@weci.net

Erica Schmidt

Manager, Power Contracts

Sunflower Electric Power Corporation

eschmidt@sunflower.net